

VideoXpert Integration - Symmetry Professional Installation Manual

INSTALLATION MANUAL
V1.2 | 26-Jul-17

PELCO[™]

by Schneider Electric

Contents

- 1. Introduction 3
- 2. Abbreviations 3
- 3. Version Information 3
 - 3.1. Integration Component Version..... 3
 - 3.2. VideoXpert Version 3
 - 3.3. Symmetry Professional Version..... 3
- 4. System Overview 3
- 5. Platform Specification 4
- 6. Prerequisites 4
- 7. Installation Steps 5
 - 7.1. Step 1 – Start installation 5
 - 7.1. Step 2 – Install Complete..... 6
- 8. System Configurations 7
- 9. Uninstallation Steps 7
 - 9.1. Step 1 – Start Uninstallation..... 7
 - 9.2. Step 2 – Uninstall Complete 8
- 10. User Guide 8
- 11. References..... 8
- 12. Support..... 8
- 13. Copyright Notice..... 8

1. Introduction

This document is the installation manual for VideoXpert Integration with Symmetry Professional. The objective of this document is to provide information about the system specification, installation and uninstallation procedures.

2. Abbreviations

#	Abbreviation	Definition
1	VMS	Video Management System
2	VX	VideoXpert
3	VxSDK	VideoXpert Software Development Kit
4	DS	Digital Sentry
5	PTZ	Pan Tilt Zoom

3. Version Information

3.1. Integration Component Version

#	Component Name	Version	Description
1	VideoXpertSymmetryInstaller.exe	1.2	Symmetry Professional Integration driver Installer

3.2. VideoXpert Version

#	Component Name	Version	Remarks
1	VideoXpert Core	2.0.1.10	Nil
2	VideoXpert Professional	1.0.0.3226	Nil
3	VideoXpert Media Gateway	2.0.0.62	Nil
4	VideoXpert Storage	2.0.1.14	Nil
5	VxSDK	2.0	Nil

3.3. Symmetry Professional Version

#	Component Name	Version	Remarks
1	Symmetry Software	8.1	
2	XMLOpen Integration Module	8.1	

4. System Overview

The proposed solution is an integration driver for Symmetry Professional security management system. This integration helps Symmetry to connect with VideoXpert. The integrated system provides end user benefit to use any one system to access information from both. Users who are more comfortable with using Symmetry may use the same to access cameras, feeds and events from VideoXpert deployed in the same infrastructure. Users who are more comfortable with VideoXpert, may use Admin Portal or OpsCenter Client to view or acknowledge access control events from Symmetry.

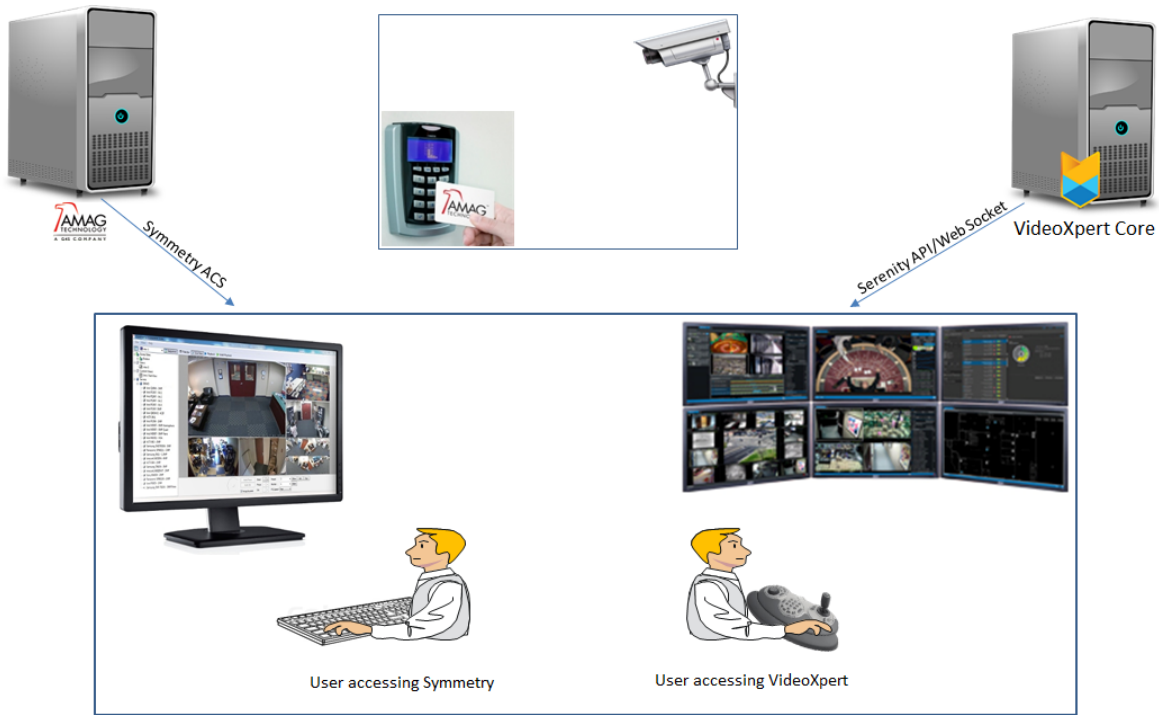


Figure 1: System Overview

Symmetry integration driver extends the capabilities of Symmetry system by integrating VideoXpert’s cutting-edge technology. VideoXpert provides live streams and events from various IP cameras that are placed in different entry exit points. The integration driver shall be using VxSDK for all its interfacing needs with VideoXpert.

5. Platform Specification

#	Parameter	Specification
1	Operating System	Windows 10 – 64Bit
2	Processor	Intel i7
3	RAM	8GB or above
4	Hard Disk	500GB

6. Prerequisites

The VideoXpertSymmetryInstaller installs as a Symmetry Plugin and the following are the prerequisites for this integration driver.

1. Symmetry Software v8.1

Symmetry software should be installed and licensed for the proper functioning of the integration. Following message box will be shown if Symmetry is not installed.

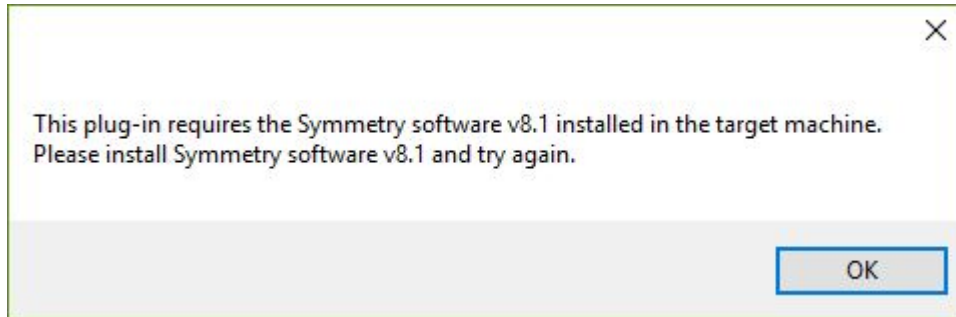


Figure 2: Symmetry not installed

2. XML Open Integration module v8.1

7. Installation Steps

7.1. Step 1 – Start installation

Double click on the VideoXpertSymmetryInstaller.exe file to start the installation. Installation wizard starts with the following window.

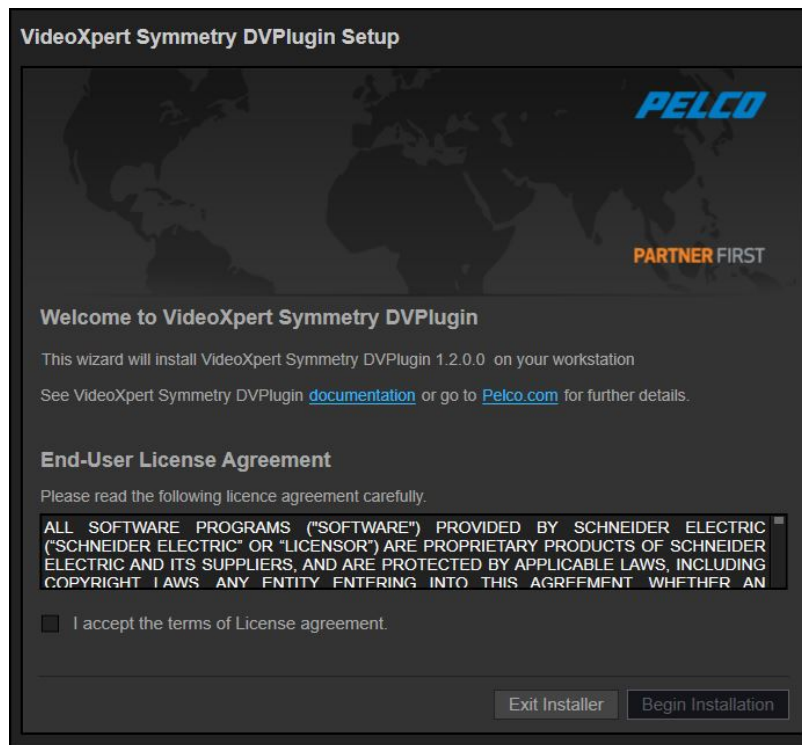


Figure 3: Installation home screen

Click **Begin Installation** button to start installation.

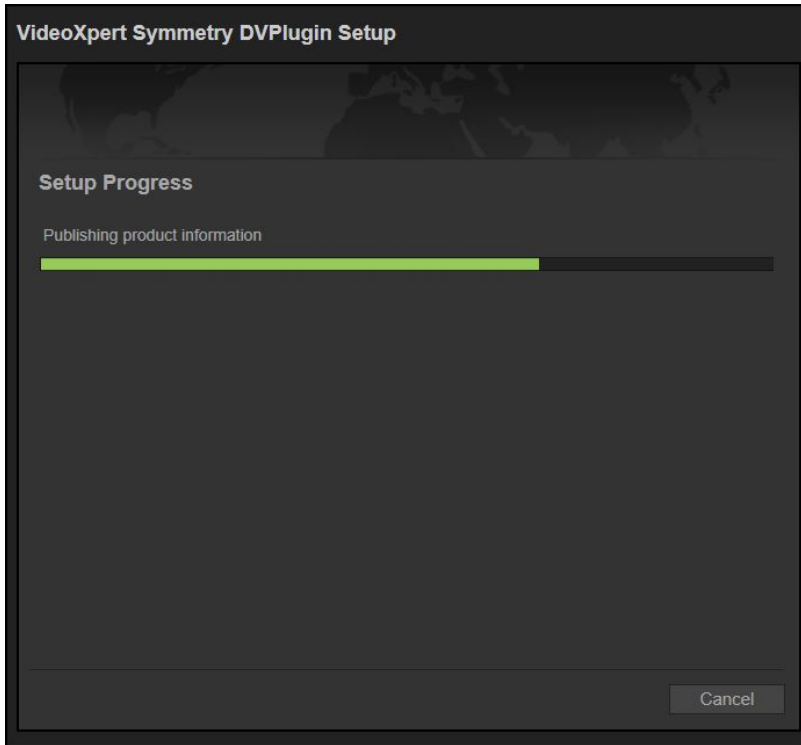


Figure 4: Installation progress

7.1. Step 2 – Install Complete

Click **Close** button to finish the installation. Machine will restart to complete the installation.

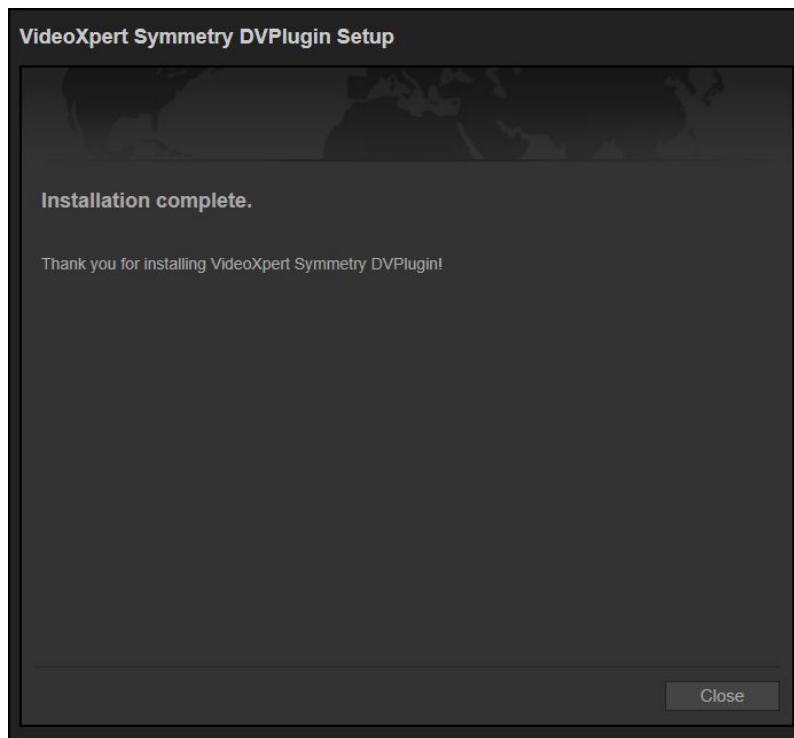
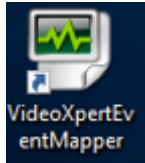


Figure 5 : Install complete

8. System Configurations

1. After machine restarts,
 - Go to the path “C:\Program Files (x86)\Security Management System\Plugins\VideoXpert Symmetry Integration Driver\Scripts” and run the batch file “SymmetryRegister.bat” with **administrator** privilege.
 - If XML Open integration module is configured; open “C:\Program Files (x86)\Security Management System\Plugins\VideoXpert Symmetry Integration Driver\VideoXpertEventInjector ” config file and change the IP address to the machine where XML open integration module is installed.
 - VideoXpert EventMapper icon will display in the desktop



- VideoXpert Event Injector service will be running in the machine

9. Uninstallation Steps

9.1. Step 1 – Start Uninstallation

In order to uninstall or repair first the following window will be shown. Click the **Uninstall** button to start uninstallation.

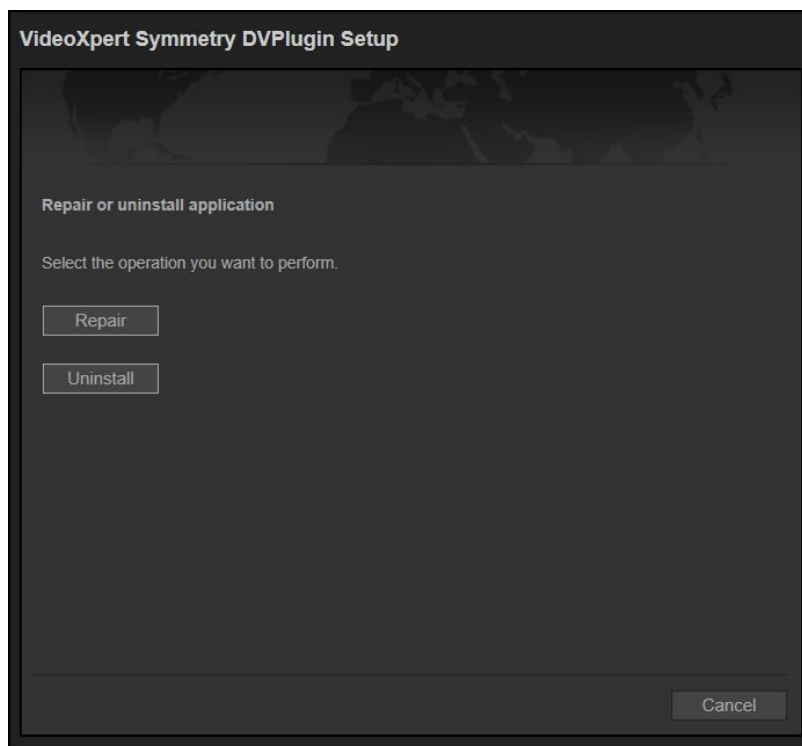


Figure 6: Uninstall home window

9.2. Step 2 – Uninstall Complete

Following window will be shown once the uninstallation is completed. The machine will restart once the Restart button is clicked.

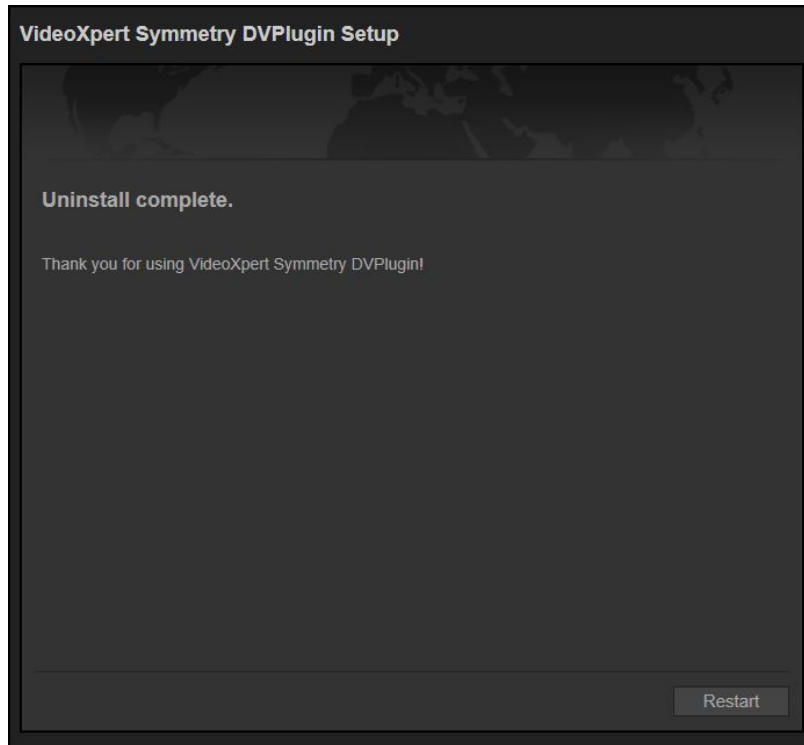


Figure 7: Uninstall complete

10. User Guide

Refer *VideoXpert Integration - Symmetry Professional [User Guide].docx*

11. References

#	Documents/Inputs	Description
1	Discussions	Technical and requirement analysis discussions between all internal and external stakeholders.
2	VideoXpert SDK	Documentation of VideoXpert SDK

12. Support

If the instructions provided fail to solve your problem, contact Pelco Product Support at 1-800-289-9100 (USA and Canada) or +1-559-292-1981 (international) for assistance.

13. Copyright Notice

© Copyright 2017, Pelco, Inc. All rights reserved.

REVISION HISTORY

Version	Date	Description	Amended By	Approved By
0.9	11-Apr-17	Initial Draft	Amaljith T M	Vijo Varghese
1.0	17-Apr-17	Updated with Review Comments	Amaljith T M	Vijo Varghese
1.1	28-Apr-17	Updated	Amaljith T M	Vijo Varghese
1.2	26-Jul-17	Updated for release	Arun C B	Vijo Varghese



Pelco by Schneider Electric 3500 Pelco Way Clovis, California 93612-5699 United States
USA & Canada Tel (800) 289-9100 Fax (800) 289-9150
International Tel +1 (559) 292-1981 Fax +1 (559) 348-1120
www.pelco.com www.pelco.com/community