

Access Control System Viewer Installation Manual

INSTALLATION MANUAL
V3.0 | 05-Apr-19

PELCO[™]

by Schneider Electric

Contents

- 1. Introduction 3
- 2. Abbreviations 3
- 3. Version and Licensing Information 3
- 4. System Overview..... 3
- 5. Platform Specification 4
- 6. Prerequisites 4
- 7. Installation Steps..... 5
 - 7.1. Access Control System Client Integration 5
 - 7.1.1. Step 1 – Start installation 5
 - 7.1.2. Step 2 – Install Complete 8
- 8. Uninstallation Steps 8
 - 8.1. Access Control System Client Integration 8
 - 8.1.1. Step 1 – Start Uninstallation 8
 - 8.1.2. Step 2 – Uninstall Complete..... 9
- 9. User Guide..... 10
- 10. Support..... 10
- 11. Copyright Notice 10

1. Introduction

This document is the installation manual for Access Control System Viewer. The objective of this document is to provide information about the system specification, installation and uninstallation procedures.

2. Abbreviations

#	Abbreviation	Definition
1	VMS	Video Management System
2	VX	VideoXpert
3	ACS	Access Control System
4	OCC	Ops Center Client

Table 1: Abbreviations

3. Version and Licensing Information

Version 3.x and above of the plugin requires VideoXpert version 3.1.x and higher in order to communicate to the VideoXpert system.

As of VideoXpert version 3.1.x, licensing is required to operate the plugin within VideoXpert Ops Center. The part number for the Access Control System Viewer is "INT-ACSPLUGIN".

4. System Overview

The Access Control System Viewer is an OCC Plug-in that enables the communication and data exchange from various Access Control Systems to the VideoXpert system. A server component, called an Access Control Server, communicates directly to the Access Control System and relays information to the Access Control System Viewer while relaying events between the Access Control System and VideoXpert. While the ACS Server handles events, it also provides other information to the Access Control System Viewer, such as user images that the Access Control System Viewer may display in association with events injected by the ACS Server.

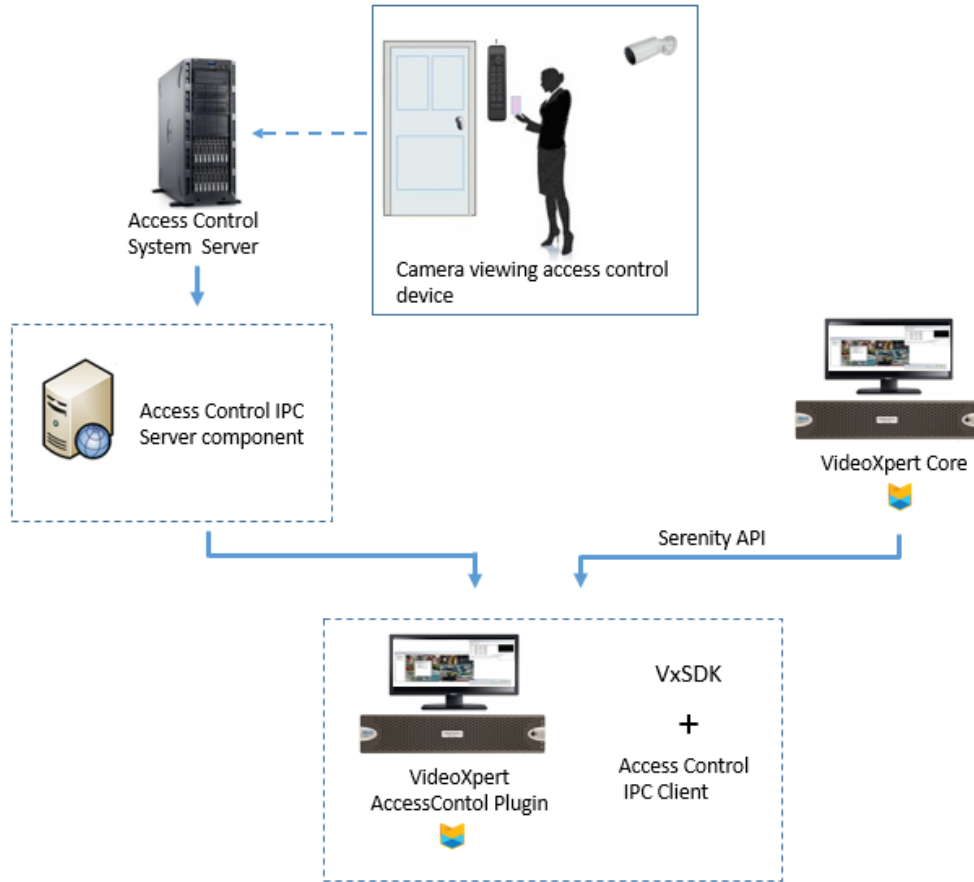


Figure 1: System Overview

5. Platform Specification

#	Parameter	Specification
1	Operating System	Windows 10 – 64Bit
2	Processor	Intel i7
3	RAM	4GB or higher

Table 2: Platform Specification

6. Prerequisites

Following are the prerequisites which need to be installed before installation of the Access Control System Viewer.

1. VideoXpert Ops center Client

7. Installation Steps

7.1. Access Control System Client Integration

7.1.1. Step 1 – Start installation

Installation process starts with the following window. From this window the user can go on with the installation or exit from the installer.

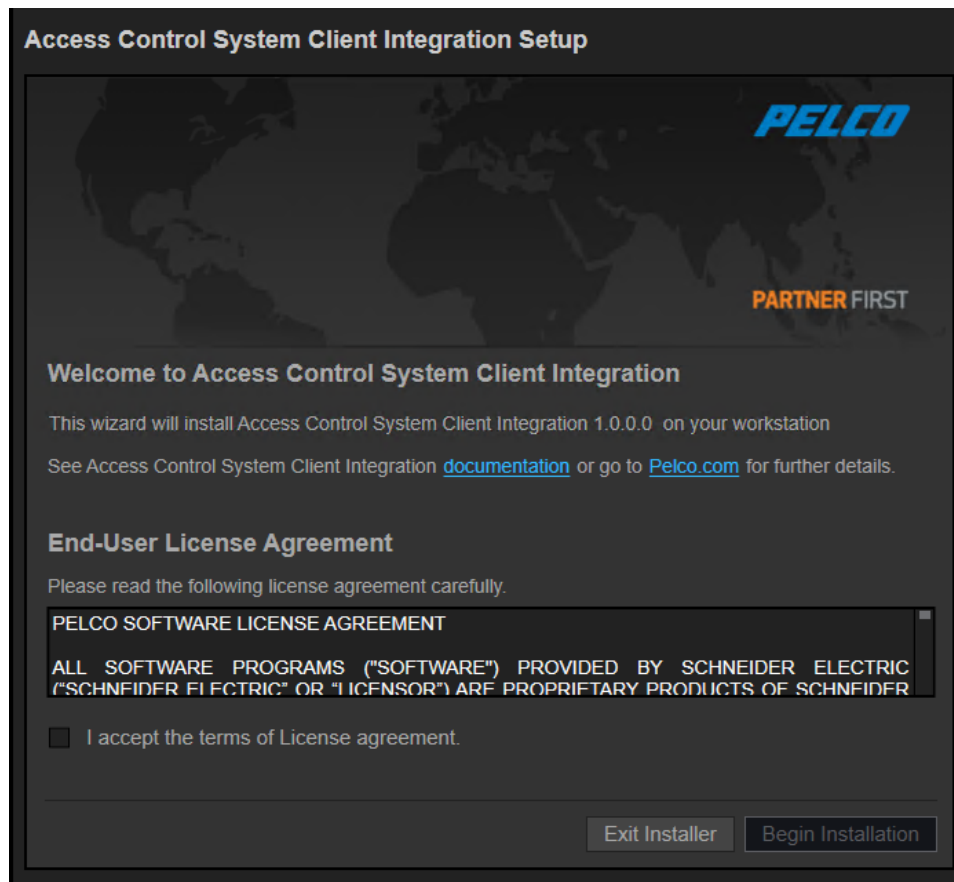


Figure 2: Installation home screen

On clicking the **Exit Installer** button a message box shown to confirm the exit.

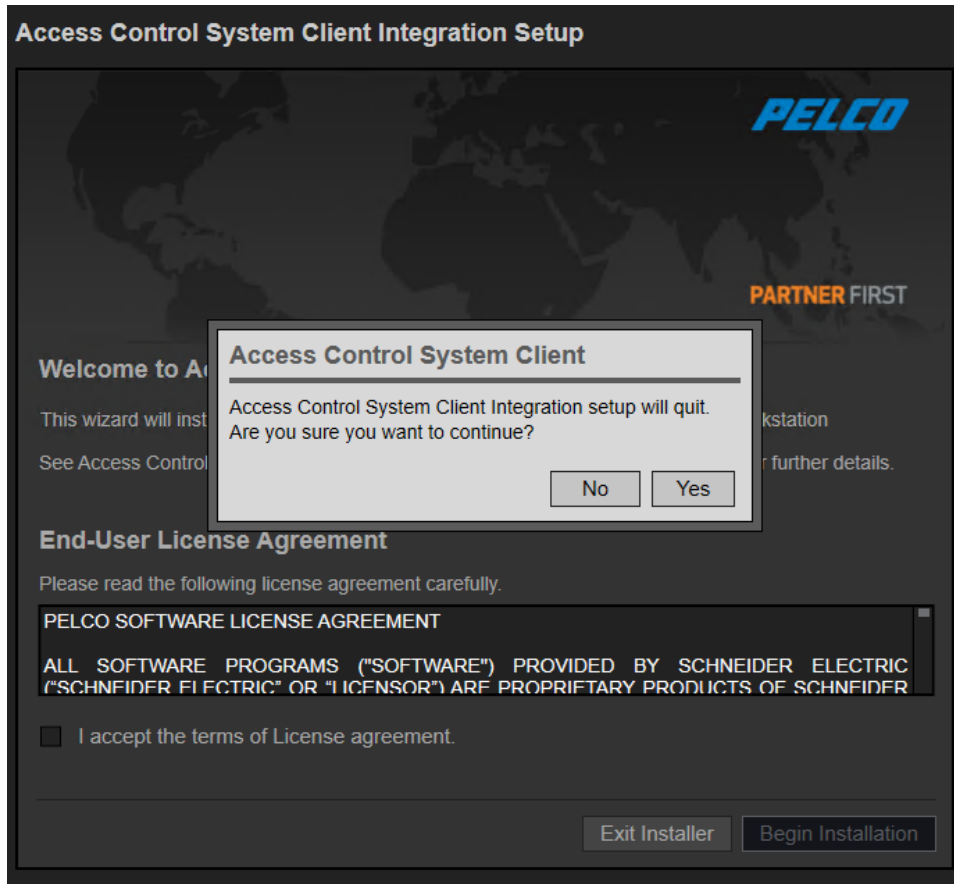


Figure 3: Exit Installer screen

Click **Begin Installation** button to start installation.

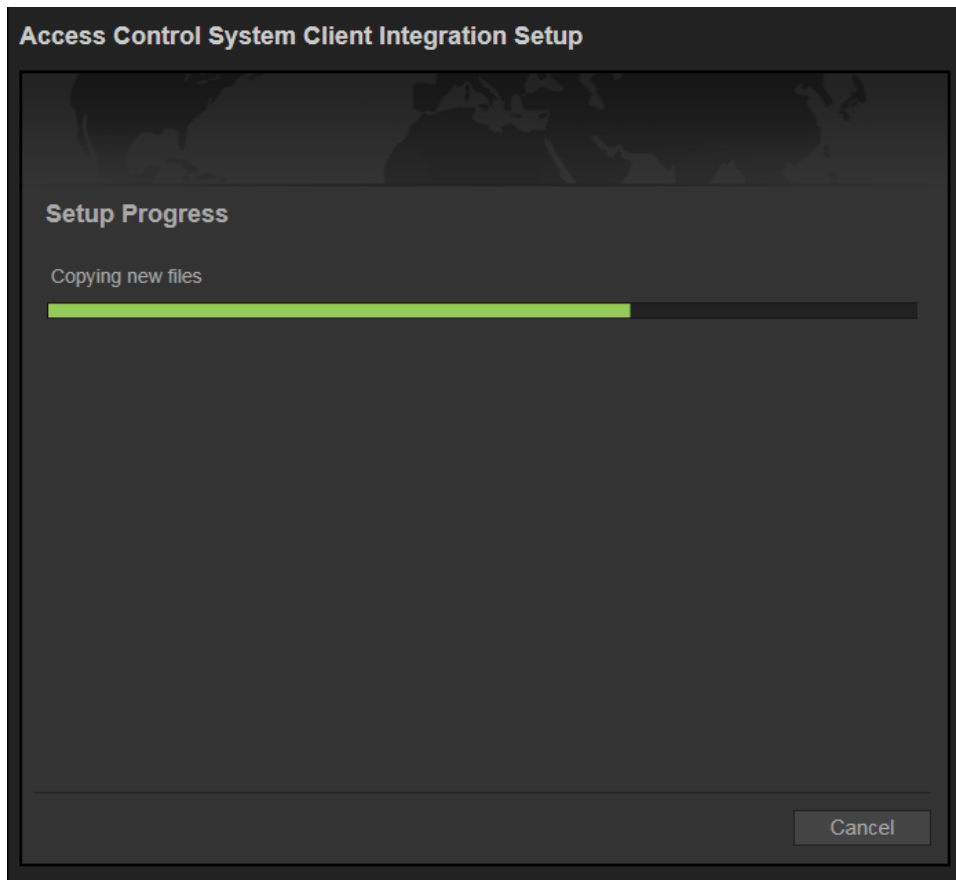


Figure 4: Installation progress

7.1.2. Step 2 – Install Complete

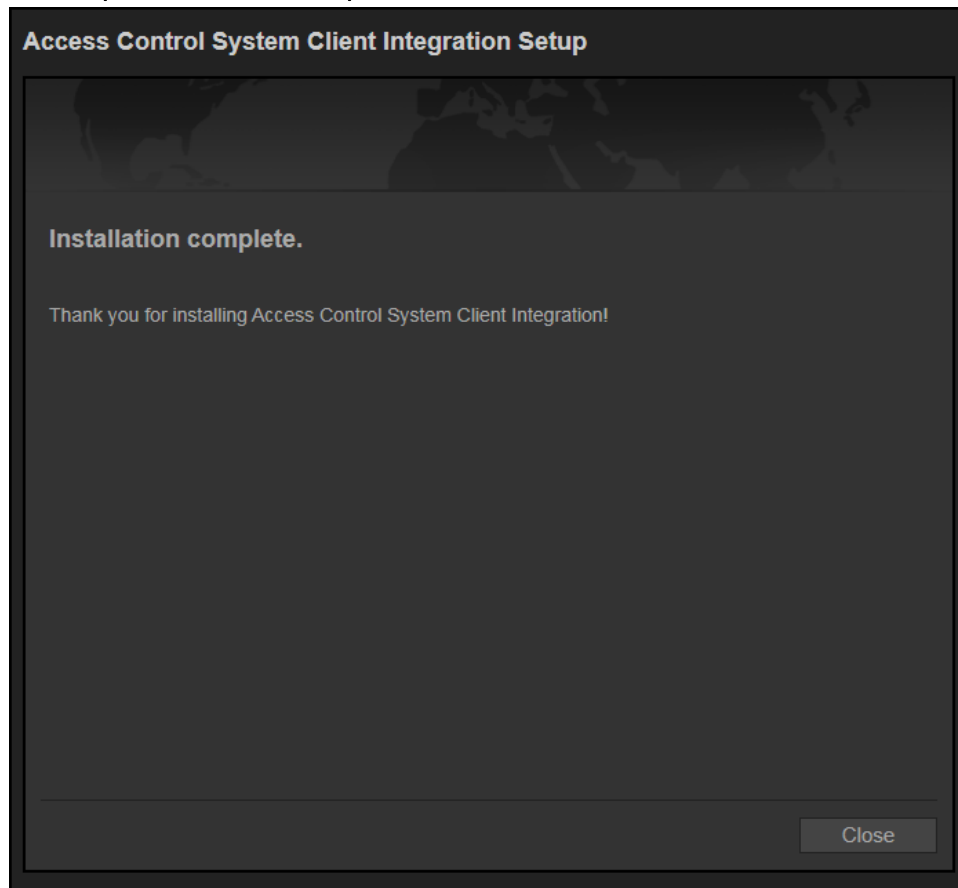


Figure 5: Install complete

8. Uninstallation Steps

8.1. Access Control System Client Integration

8.1.1. Step 1 – Start Uninstallation

In order to uninstall or repair first the following window will be shown. Click the **Uninstall** button to start uninstallation.

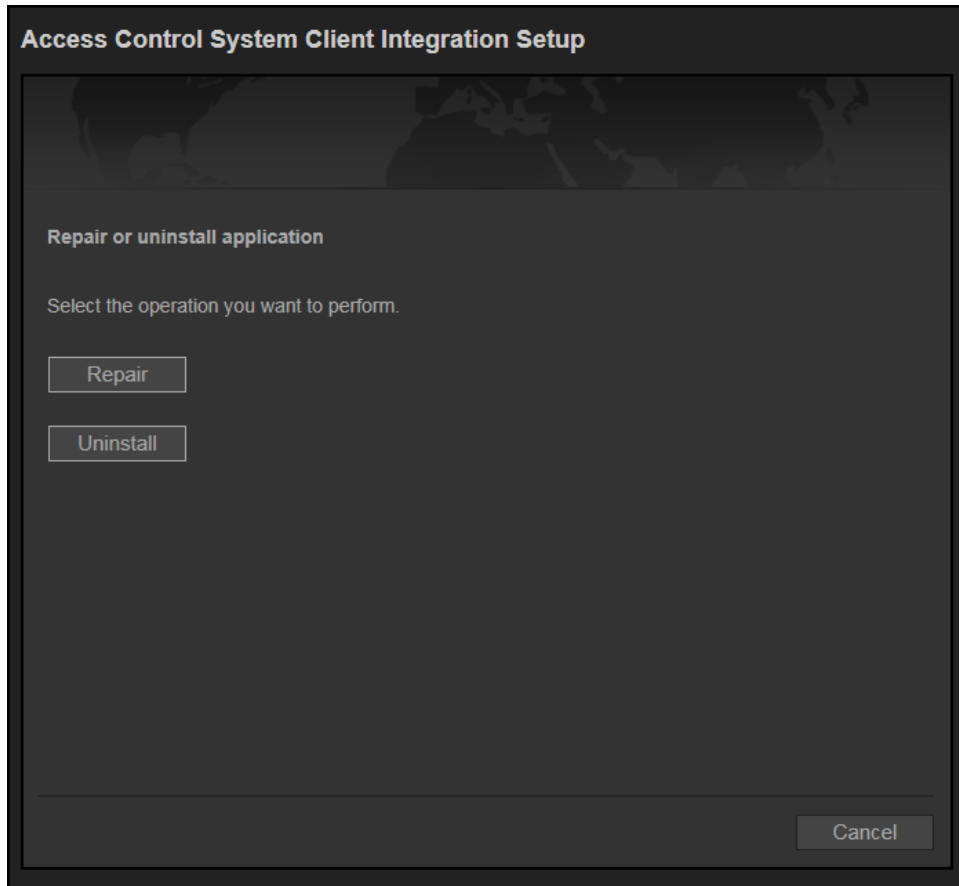


Figure 11: Uninstall home window

8.1.2. Step 2 – Uninstall Complete

Following window will be shown once the uninstallation is completed.

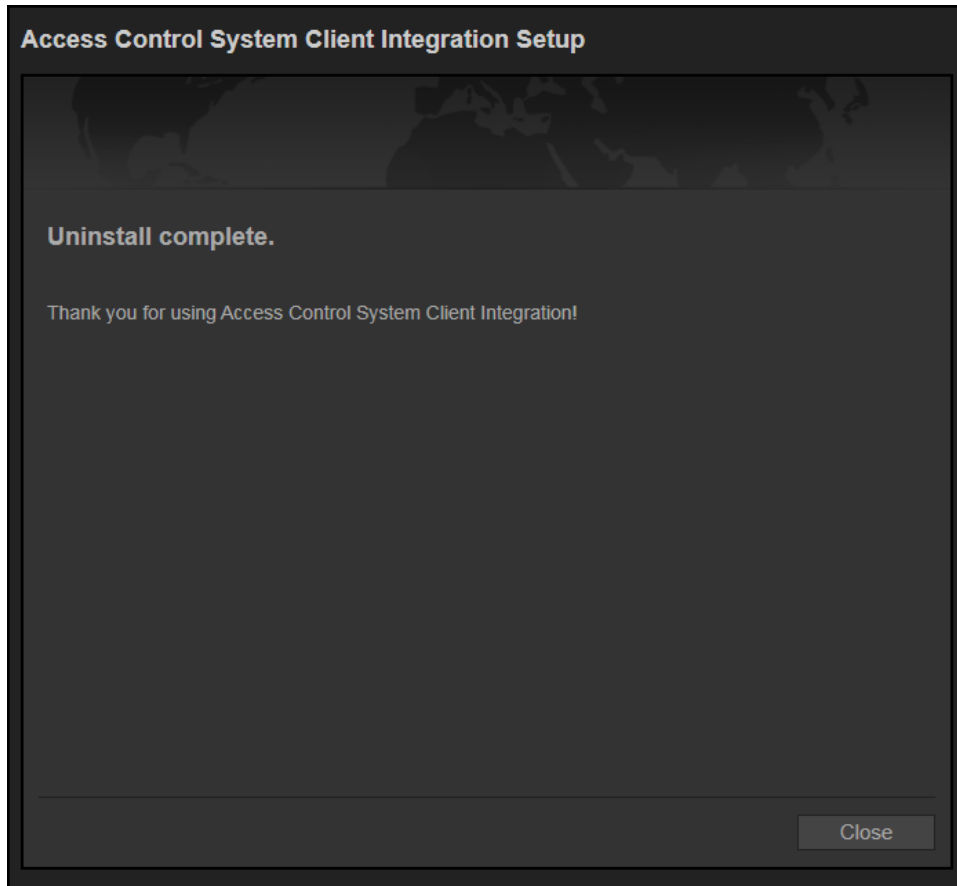


Figure 12: Uninstall complete

9. User Guide

Refer *Access Control System Viewer [User Guide].docx*

10. Support

If the instructions provided fail to solve your problem, contact Pelco Product Support at 1-800-289-9100 (USA and Canada) or +1-559-292-1981 (international) for assistance.

11. Copyright Notice

© Copyright 2019, Pelco, Inc. All rights reserved.



Pelco by Schneider Electric 3500 Pelco Way Clovis, California 93612-5699 United States
USA & Canada Tel (800) 289-9100 Fax (800) 289-9150
International Tel +1 (559) 292-1981 Fax +1 (559) 348-1120
www.pelco.com www.pelco.com/community